



Beaconsfield Venue Hire Information Pack

"Tucked away just off the banks of the Albert Embankment, lies a secret gem of a location... Great management with a love and pride of their venue, a fantastic space and an atmosphere all of its own. Irony is, we don't want anyone else hearing about it".

James Male, Out of the Blue
Communications Ltd

Beaconsfield, 22 Newport Street, London, SE11 6AY
info@beaconsfield.ltd.uk | 0207 582 6465 | www.beaconsfield.ltd.uk

BEACONSFIELD 

Built on Victorian philanthropy, the former Lambeth Ragged School has been transformed into a stunning contemporary art gallery. From the breathtaking height and volume of the Upper Gallery, to the raw urban aesthetic of the original Victorian railway Arch Space - Beaconsfield is a unique and atmospheric site with three very distinct spaces that capture the best of London design.

We have 3 large indoor spaces and a secure external yard.

The high quality flexible venue and its galleries may be hired for:

- Wedding receptions
- Conferences
- Filming and photoshoots
- Product launches
- Parties
- Seminars and meetings
- Fashion shows

Previous clients include:

- Soho House
- Budweiser
- Jack Daniels
- Max Factor
- Fat Face
- Vodafone
- Hauser and Wirth



The Lower Space

The Lower space has white walls, an original Yorkstone floor, cast iron pillars and large, original windows providing excellent natural light. It has an intimate feel, ideal for smaller launches and receptions. There are down-light spotlights with dimmers and 6 double sockets.

The Lower space can be hired on its own but is included in any hire, as this is where the toilet and kitchen facilities are located.

The kitchen/bar area has a double sink, microwave oven, 2 refrigerators and 3 double electricity sockets. There are excellent toilet facilities: 2 Gents, 2 Ladies and 1 Wheelchair access.

79.45 square metres (1300 sq. ft.)
Capacity: 150



BEACONS

The Upper Space

The Upper Space with its 7 metre high white walls, original raked, stepped wooden floor and large arched windows is a spectacular room, full of natural light. The space has a lighting rig with spots and up lighting, blackout facilities, and 18 mounted double electricity sockets. Along one wall there is a projection balcony with Broadband capability and 3 double sockets.

The whole space has underfloor heating and has single and 3 phase electricity. This large, impressive space is ideal for product launches, conferences and corporate hospitality.

136.5 square metres (1600 sq. ft.)

Capacity: 150



BEACONS 



The Arch Space

The Arch Space has exposed brick walls, concrete floor and a state-of-the-art invisible infrared with sprung wooden floor (grey painted) heating system. Its urban aesthetic complements the period features of the Upper and Lower spaces and its stunning, cavernous capacity can accommodate ambitious product launches, fashion shows and film sets.

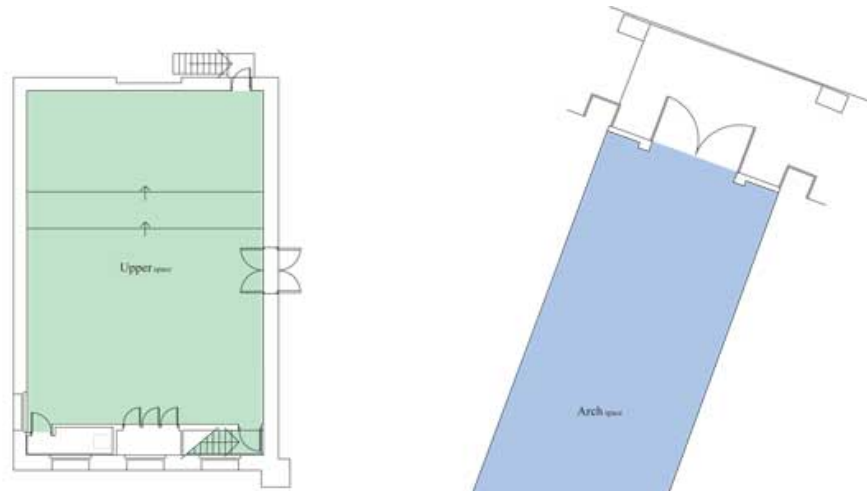
Served by single and 3 phase electricity this durable space can be accessed through the lower gallery and yard.

190.6 square metres (3150 sq. ft.)

Capacity: 400

BEACONS 

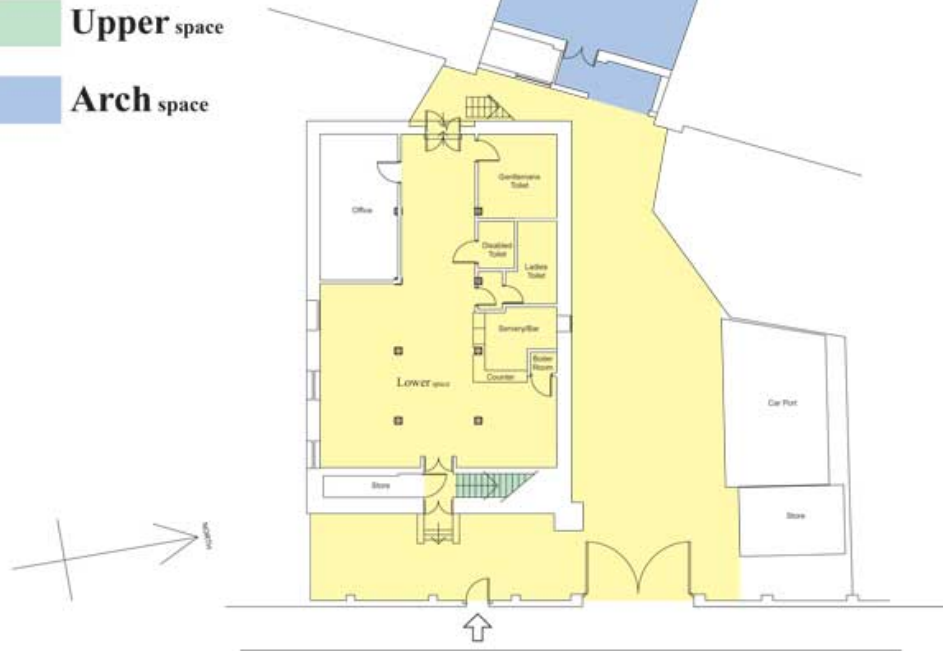
Site Plan



 **Lower** space & Yard

 **Upper** space

 **Arch** space



Approved Suppliers

Harriet Benton Catering

Harriet Benton
<http://harrietbenton.com>

Ciao Food Catering

Pierluigi Sandonnini
@ChefPier77



BEACONS

Contact

To enquire about a booking, please fill in the Venue Hire Enquiry Form and send to Gabriela Cala-Lesina at gabriela@beaconsfield.ltd.uk

Beaconsfield
22 Newport Street
Vauxhall
London
SE11 6AY

T: 0207 582 6465

E: info@beaconsfield.ltd.uk



@beaconsfieldart



[facebook.com/BeaconsfieldGallery](https://www.facebook.com/BeaconsfieldGallery)



BEACONSFIELD