

BEACONSFIELD



Beaconsfield hires

A former Victorian Ragged School, Beaconsfield has been transformed into a stunning contemporary art gallery.

From the breathtaking height and volume of the Upper gallery, to the raw urban aesthetic of the original double length Victorian railway arch - Beaconsfield is a unique and atmospheric site with three very distinct spaces that capture the best of London design. The high quality flexible venue has hosted product launches, fashion shows, conferences and parties, with previous clients including Soho House, Budweiser, Jack Daniels, Max Factor, Fat Face and Sleazenation.

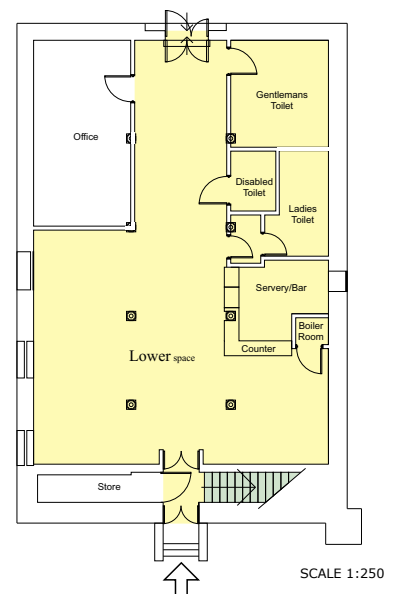


Lower space



79.45 square metres (1300 sq. ft.)

The **Lower space** has white walls, an original York stone floor, cast iron pillars and large, original windows providing excellent natural light. It has a more intimate feel, ideal for smaller launches and receptions. There are down-light spotlights with dimmers and 6 double sockets. The **Lower space** is included in any hire, as this is where the toilet and kitchen facilities are located. The kitchen/bar area has a double sink, microwave oven, 2 refrigerators and 3 double electricity sockets. There are excellent toilet facilities: 2 Gents, 2 Ladies and 1 Wheelchair access.

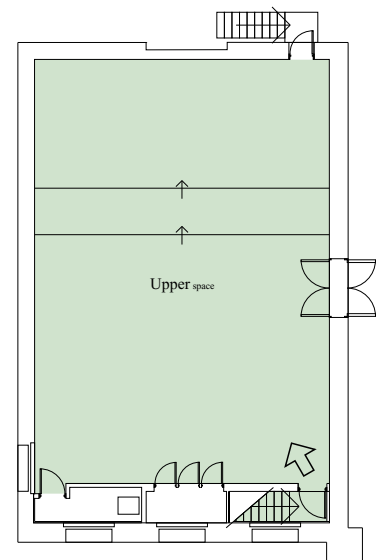


Upper space



136.5 square metres (1600 sq. ft)

The **Upper space** with its 7 metre high white walls, original raked, stepped wooden floor and large arched windows is a spectacular room, full of natural light. The space has a lighting rig with spots and up lighting, blackout facilities, and 18 mounted double electricity sockets. Along one wall there is a projection balcony with Broadband capability and 3 double sockets. The whole space has under floor heating and has single and 3 phase electricity. This large, impressive space is ideal for product launches, conferences and corporate hospitality.



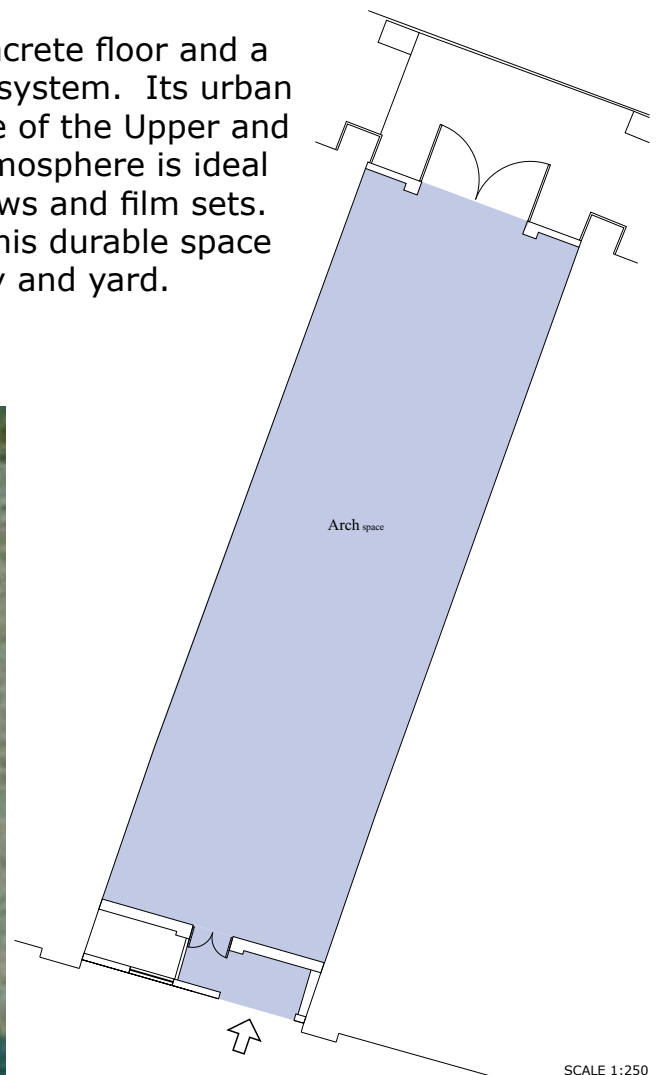
SCALE 1:250

Arch space



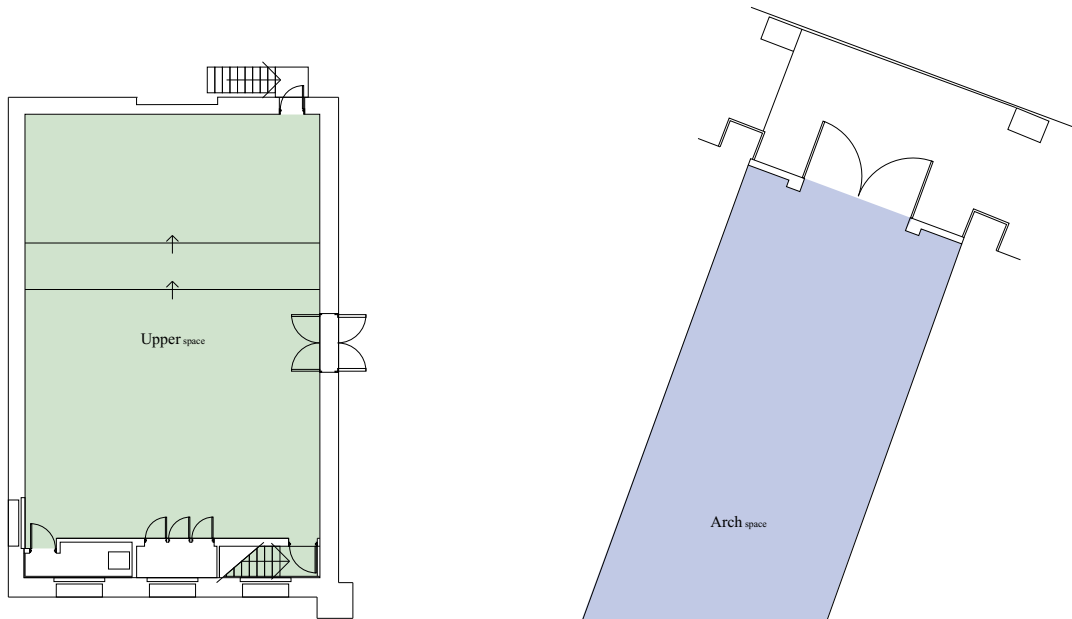
190.6 square metres (3150 sq. ft.)




The **Arch** space has exposed brick walls, concrete floor and a state-of-the-art invisible infrared heating system. Its urban aesthetic complements the pristine nature of the Upper and Lower spaces and its stunning, unique atmosphere is ideal for parties, product launches, fashion shows and film sets. Served by single and 3 phase electricity this durable space can be accessed through the lower gallery and yard.

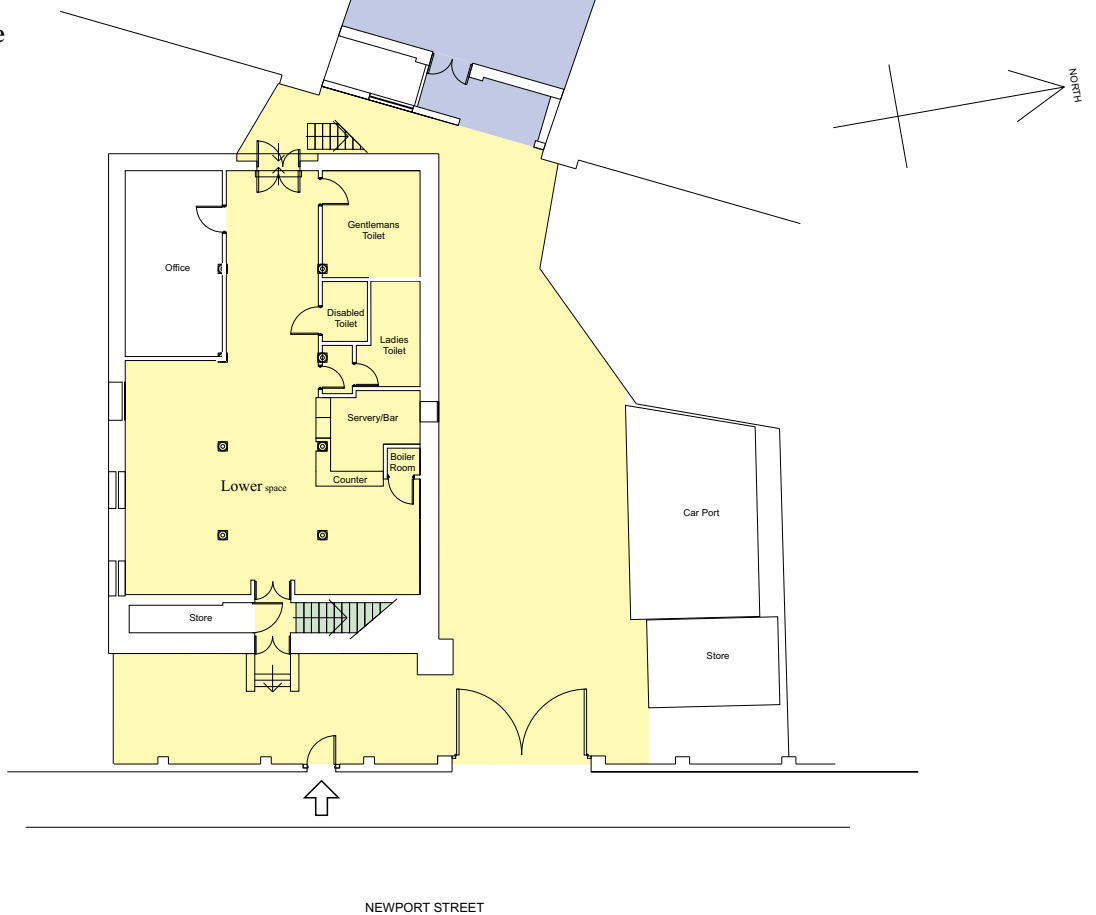


SCALE 1:250

Plans



-  **Lower space & Yard**
-  **Upper space**
-  **Arch space**



SCALE 1:250