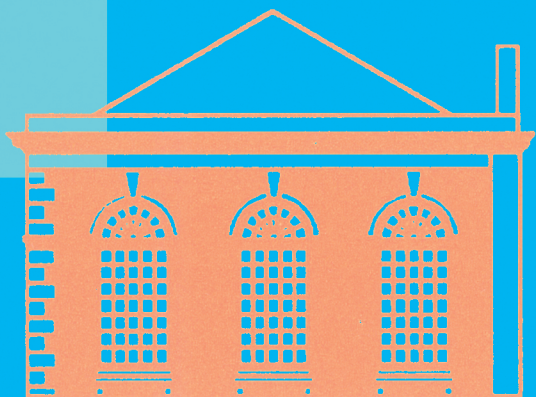


#SUPPORT BEACONSFIELD



“Beaconsfield has a unique place in London’s cultural landscape. It is distinguished by its history of providing a forum for extraordinary events and exhibitions, stimulating passionate, candid and robust debate about art’s production and its ideological underpinnings, as well as providing a much-needed locus for the thriving artistic community in which it sits.”

—Sheena Wagstaff

Chairman of the Department of Modern and Contemporary Art,
The Metropolitan Museum of Modern Art, New York.

BEACONSFIELD

THE VISION

#SupportBeaconsfield is a stepping-stone in our history as this autonomous art space enters its 20th year. After two decades as a fixed-term client of Arts Council England, Beaconsfield is going it alone.

Founded as an educational charity by artists in 1994 with the desire to fill a niche between the institution, the commercial and 'alternative', Beaconsfield remains a unique, non-profit, artist-led entity, placing equal emphasis on audiences and artists.

Beaconsfield's reputation rests on the staging of an influential programme of exhibitions, residencies, limited editions and discursive events with commissions (beacons) in a range of art mediums (field). The organisation's function as a primary research vehicle is international and particularly notable for pioneering developments in time-based, political and sound art as well as curatorial practice.

We need to raise £250,000 per annum to realise Beaconsfield's full potential as a self-sufficient, critically engaged locus operating beyond the mainstream. We already rely upon your moral support and now need your practical support to stay active and open with free admission.

WITH YOUR SUPPORT WE WILL BE ABLE TO:

- stay active and open with free admission to the public
- continue to support and stimulate the artists we commission
- keep delivering art in original ways
- sustain a reflective space where people adjust their perspective
- continuously expand the critical context within which art is interpreted

YOUR DONATION WILL MAKE A DIFFERENCE:

- £100 will open the doors for an evening event
- £500 will cover the cost of presentation materials for one exhibition
- £5000 will allow a new art commission
- £250,000 will cover venue running costs for one year
- £1,000,000 will keep Beaconsfield open to the public for four years

However large or small, your donation will make a big difference to Beaconsfield's survival as a unique artists' project. We value each contribution that directly enables the commissioning of emergent and established artists. Together we can secure the gallery's future as a truly independent, streamlined resource for the development and presentation of contemporary art.

HOW TO SUPPORT BEACONSFIELD

Become a Friend or Patron of Beaconsfield

Friend £100

Friends' benefits

A Friends card and limited edition tote bag on joining

Special invitations to events, launches and private views of exhibitions

Recognition on our website

(Founding Friend – annual friendship £85 – offer until 31 December 2015)

Best Friend £500 - £1000

All of Friends' benefits plus

Priority booking on Beaconsfield Artist Editions

£15 credit for any event, Beaconsfield Edition or Ragged Canteen purchase

Recognition on our website and in selected Beaconsfield publications

Patron £5000+

All of Best Friends' benefits plus

Discount on selected Beaconsfield Artist Editions

Invitation to the annual Directors' dinner

Invitation to artist dinners

Recognition on our Patrons board located publicly in the gallery

(Founding Patron – annual patronage £4500 – offer until 31 December 2015)

Corporate and Individual Sponsorship

A bespoke package for supporting Beaconsfield exhibitions and development

Other ways to support

- Purchase a Beaconsfield Artist Edition (beaconsfield.ltd.uk/shop)
- Hire our venue for your events (beaconsfield.ltd.uk/venue)
- Dine at our ethically conscious Ragged Canteen (Weds – Sat, 11am – 5pm)
- Attend our regular fundraising events
- Visit our shop for changing exclusive limited edition artworks
- Help us spread the word on social media #SupportBeaconsfield

For more information please contact:

Gabriela Cala-Lesina: gabriela@beaconsfield.ltd.uk 020 7582 6465

Beaconsfield, 22 Newport Street, Vauxhall, London SE11 6AY

www.beaconsfield.ltd.uk

Follow us on twitter: @BeaconsfieldArt

Like us on facebook: facebook.com/BeaconsfieldGallery

#SUPPORTBEACONSFIELD DONATION FORM

Details of Benefactor

Title _____ First Name _____

Surname _____

Address _____

Postcode _____

Tel _____ Mobile _____

Email _____

Payment Details

Annual Rates (please tick) or Offer until December 2015 (please tick)

Patron £5000+ ☐ Founding Patron £4500 ☐

Best Friend £500-£1000 ☐

Friend £100 ☐ Founding Friend for £85 ☐

How to pay

Standing order – please complete section below ☐

Bank transfer – see details below ☐

Cheque – please make payable to Beaconsfield Ltd ☐

Credit / debit card – Tel: +44 (0)207 582 6465 ☐

Paypal/GoCardless – visit www.beaconsfield.ltd.uk ☐

I would like to donate £ _____ to Beaconsfield

Signed _____ Dated _____

Set up a Standing Order

Instruction to your bank or building society to set up a Standing Order
- please return to Beaconsfield and we will instruct your bank:

Bank/Building Society Name _____

Bank/Building Society Address _____

Postcode _____

Name(s) of Account Holder(s) _____

Branch Sort Code _____ Account Number _____

Please pay Beaconsfield the sum of £ _____

yearly / monthly (please circle), starting from: _____

(please make this date at least one month from today) until further notice.

Signed _____ Dated _____

Beaconsfield account: CAF Gold, Account No. 00094815, Sort Code 405240

Accreditation: please specify how you would like to be credited on our website and printed material:

If you prefer to remain anonymous, please tick ☐

TAX EFFECTIVE GIVING – GIFT AID

It costs you nothing to make your gift go even further.

As a Friend or Patron all you have to do is complete the following Gift Aid declaration and your donation to Beaconsfield will be increased by a significant amount – even more if you are a higher rate taxpayer.

Gift Aid Declaration (please tick)

I am eligible as a UK taxpayer and consent to Beaconsfield claiming Gift Aid on my behalf on all donations that I make until I notify you otherwise ☐

I confirm I have paid or will pay an amount of Income Tax and/or Capital Gains Tax for the current tax year (6 April to 5 April) that is at least equal to the amount of tax that all the charities that I donate to (and Beaconsfield), will reclaim on my gifts for the current tax year. I understand that other taxes such as VAT and Council Tax do not qualify. I understand the charity will reclaim 25p of tax on every £1 that I have given.

Signed _____ Dated _____

If you are a higher rate taxpayer you can also benefit by personally claiming back the difference between the higher and basic rate on your donation. For a donation of £2000, you will be able to claim up to £500 from HMRC. You must include all your Gift Aid donations on your Self Assessment tax return if you want to receive the additional tax relief due to you.

The level of benefits for Friends & Patrons is based on HMRC guidelines for Gift Aid.



Please notify Beaconsfield if you:

- Want to cancel this declaration
- Are no longer a UK taxpayer
- Change your name or address

Please return your completed form to:

Beaconsfield, 22 Newport Street, Vauxhall, London, SE11 6AY

