



## Beaconsfield Venue Hire Information Pack

*"Tucked away just off the banks of the Albert Embankment, lies a secret gem of a location... Great management with a love and pride of their venue, a fantastic space and an atmosphere all of its own. Irony is, we don't want anyone else hearing about it".*

James Male, Out of the Blue  
Communications Ltd

Beaconsfield, 22 Newport Street, London, SE11 6AY  
info@beaconsfield.ltd.uk | 0207 582 6465 | www.beaconsfield.ltd.uk



Built on Victorian philanthropy, the former Lambeth Ragged School has been transformed into a stunning contemporary art gallery. From the breathtaking height and volume of the Upper Gallery, to the raw urban aesthetic of the original Victorian railway Arch Space - Beaconsfield is a unique and atmospheric site with three very distinct spaces that capture the best of London design.

We have 3 large indoor spaces and a secure external yard.

**The high quality flexible venue and its galleries may be hired for:**

- Wedding receptions
- Conferences
- Filming and photoshoots
- Product launches
- Seminars and meetings
- Fashion shows

**Previous clients include:**

- Soho House
- Budweiser
- Jack Daniels
- Max Factor
- Fat Face
- Vodafone
- Hauser and Wirth



**BEACONSFIELD**

## The Lower Space

The Lower space has white walls, an original Yorkstone floor, cast iron pillars and large, original windows providing excellent natural light. It has an intimate feel, ideal for smaller launches and receptions. There are down-light spotlights with dimmers and 6 double sockets.

The Lower space can be hired on its own but is included in any hire, as this is where the toilet and kitchen facilities are located.

The kitchen/bar area has a double sink, microwave oven, 2 refrigerators and 3 double electricity sockets. There are excellent toilet facilities: 2 Gents, 2 Ladies and 1 Wheelchair access.

79.45 square metres (1300 sq. ft.)

Capacity: 150





## The Upper Space

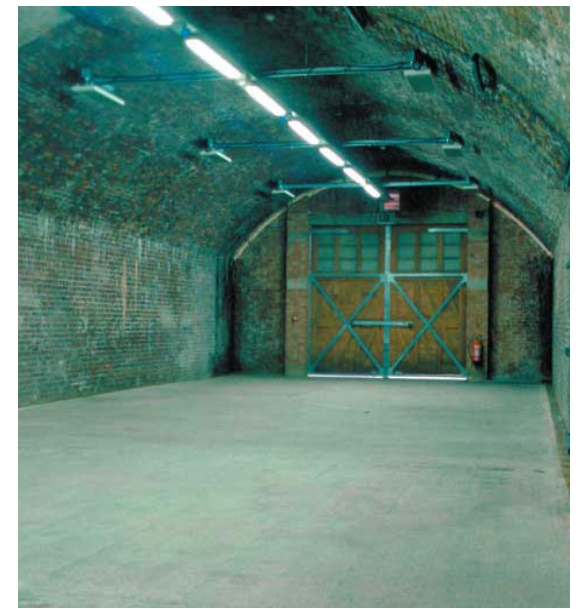
The Upper Space with its 7 metre high white walls, original raked, stepped wooden floor and large arched windows is a spectacular room, full of natural light. The space has a lighting rig with spots and up lighting, blackout facilities, and 18 mounted double electricity sockets. Along one wall there is a projection balcony with Broadband capability and 3 double sockets.

The whole space has underfloor heating and has single and 3 phase electricity. This large, impressive space is ideal for product launches, conferences and corporate hospitality.

136.5 square metres (1600 sq. ft.)

Capacity: 150





## The Arch Space

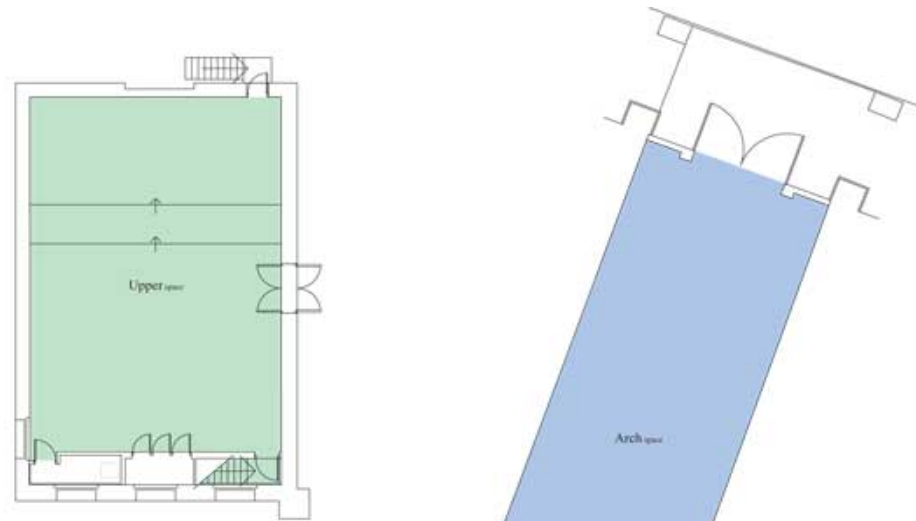
The Arch Space has exposed brick walls, concrete floor and a state-of-the-art invisible infrared with sprung wooden floor (grey painted) heating system. Its urban aesthetic complements the period features of the Upper and Lower spaces and its stunning, cavernous capacity can accommodate ambitious product launches, fashion shows and film sets.

Served by single and 3 phase electricity this durable space can be accessed through the lower gallery and yard.

190.6 square metres (3150 sq. ft.)

Capacity: 400

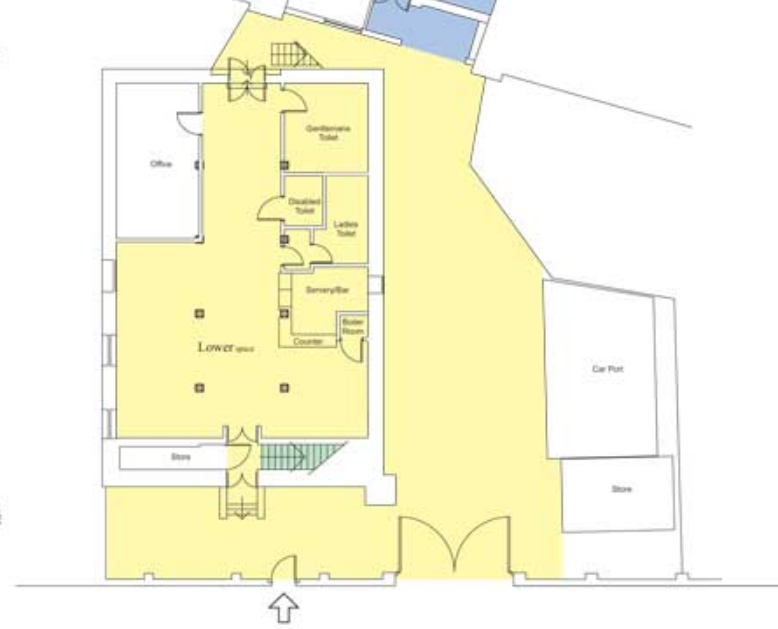
## Site Plan



**Lower space & Yard**

**Upper space**

**Arch space**





## Approved Suppliers

### Catering

#### **PenniBlack: Leading Creative Caterers**

Danelle van Tonder

[www.penniblack.co.uk](http://www.penniblack.co.uk)

*Images below by PenniBlack*

#### **Harriet Benton Catering**

Harriet Benton

[www.harrietbenton.com](http://www.harrietbenton.com)

*See next page for more information*

### Security

#### **Lexus Security Management**

[info@lexussecurity.com](mailto:info@lexussecurity.com)

0207 922 1111

[www.lexussecurity.com](http://www.lexussecurity.com)



## Hand Crafted Events



Harriet Benton events and food are produced with devotion, creativity, wit and huge amounts of style. Every occasion is bespoke and hand crafted by Harriet and her team, to give clients something exceptional with its own unique character. Where possible all ingredients are seasonal and sourced from sustainable providers.

Private and corporate clients have enjoyed Harriet's experience and originality for over 25 years. Whether it's a private dinner for 8, a drinks and canapés reception for 800 or anything in between, what all Harriet's clients have in common is a desire for quality, the highest standards of service and a memorable experience.



### Sample Dinner menu

Parmesan wafers

Egg Beaujolais

Poached egg on crisped fried bread with  
Beaujolais sauce & micro herb salad

Lamb fore shank, fennel, celery & cherry tomatoes

Broccoli with herb & anchovy dressing

Butter glazed carrot with star anise

Creamed potatoes

Orange, apricot & almond cake with maple syrup  
roast rhubarb & blood oranges served with  
rhubarb & maple syrup ice cream

### Sample Birthday Party menu

#### Canapés

Aubergine fritters with tarragon mayonnaise

Beetroot consommé with sour cream & a caraway straw

Salmon teriyaki with ginger & lime dipping sauce  
served on split skewers

Salmon & smoked salmon tartare

Mini Yorkshire pudding with rare roast sirloin  
and horseradish

#### Bowl food

Wild mushroom risotto

Fish pie with smoked haddock, haddock & cod,  
leek, celery & topped with mash

Steak, fat chips & béarnaise sauce

#### Pudding

Bonkers chocolate birthday cake

Coffee & petit fours

[harriet@harrietbenton.com](mailto:harriet@harrietbenton.com)

[www.harrietbenton.com](http://www.harrietbenton.com) 020 8747 1627



## Contact

To enquire about a booking, please fill in the Venue Hire Enquiry Form and send to Lucy Gregory at [admin@beaconsfield.ltd.uk](mailto:admin@beaconsfield.ltd.uk)

Beaconsfield  
22 Newport Street  
Vauxhall  
London  
SE11 6AY

T: 0207 582 6465  
E: [admin@beaconsfield.ltd.uk](mailto:admin@beaconsfield.ltd.uk)



@beaconsfieldart



[facebook.com/BeaconsfieldGallery](https://facebook.com/BeaconsfieldGallery)



**BEACONSFIELD**